

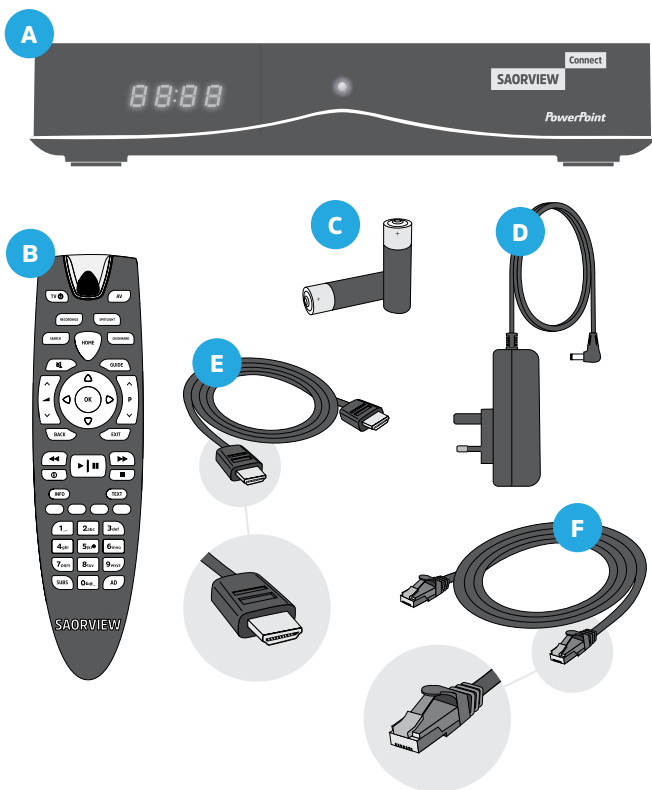
# Quick Start Guide



# Quick Start Guide

## STEP ONE – CHECK YOU HAVE EVERYTHING

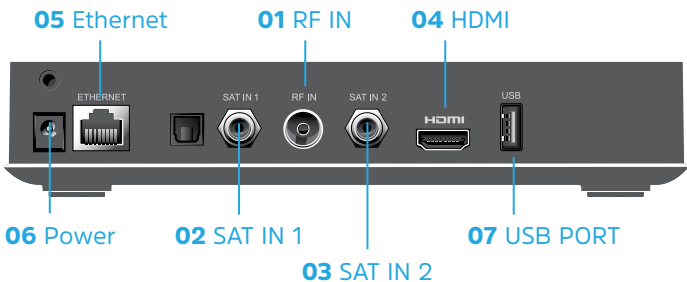
- A** Saorview Connect box
- B** Saorview remote control
- C** Batteries for the remote control
- D** Power adapter
- E** HDMI cable
- F** Ethernet cable



## STEP TWO – CONNECT YOUR BOX

Make sure the power is turned off before you begin.

- 01** Connect the cable from your TV aerial into the port – RF IN.
- 02** If you have a satellite dish and want to use it to access additional free channels, screw its cable into the port – SAT IN 1.
- 03** If you want to record programmes off satellite, you will need to screw in a second satellite cable into SAT IN 2.
- 04** Connect the box to your TV using the HDMI cable.
- 05** Next, you can connect the box to your broadband router with the Ethernet cable, or you can connect to Wi-Fi later once the box is switched on.
- 06** Connect the power adapter into the Power port, plug it in and switch it on at the socket.
- 07** Connect an external USGB3 hard drive to the USB port to enable Recordings.



---

## **Connect to your broadband**

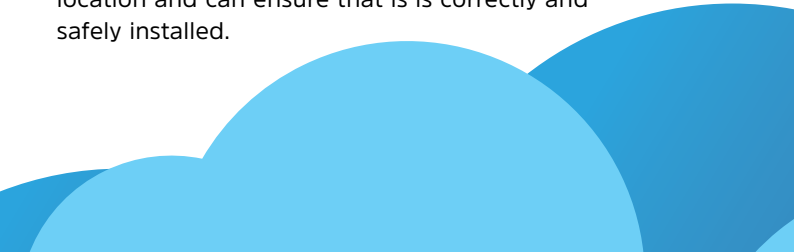
Connecting your Saorview Connect box to your broadband gives you access to On Demand players and brilliant features like Spotlight recommendations and the roll-back guide.

The best way to do this is with an Ethernet cable. Slot one end of the Ethernet cable into the port on the Saorview Connect box and the other end into a port on your broadband router. Alternatively, you can connect to your Wi-Fi network once the box is switched on and during set-up.

If you want to change your Wi-Fi connection at any time, from the Menu go to **Settings** then **Internet Connection** and the box will show you available wireless networks.

## **Connecting to a TV aerial**

Saorview recommends the use of a professionally installed UHF roof aerial to receive Saorview. It may be possible in some areas to use an attic aerial, and in some instances it may be possible to use an indoor set-top aerial. A good local installer will be aware of the best aerial solution for your particular location and can ensure that it is correctly and safely installed.



---

## STEP THREE – SET-UP

Using the power button on your remote control, switch the Saorview Connect box on, and follow the on-screen instructions to get set up. Here are some tips.

During the set-up, your Saorview Connect box will scan for the Saorview channels. If you have not connected your box to an aerial you will not receive any channels, so make sure your box is connected to your aerial.\*

If you have not connected an Ethernet cable, you will be asked to select a Wi-Fi network to connect to. To be able to watch On Demand programmes and roll-back through the Saorview Guide you need to be connected to broadband.

Your Saorview Connect box can display either English or Irish language where available – just select your preference. If you want to change your language choice you can do that at any time from the Menu – go to **Settings**, then select **Language & Accessibility**.

\* Ensure that you are in an area covered by the Saorview service. Check at [www.saorview.ie](http://www.saorview.ie)



# Handy info

## HOME SCREEN



### Home

Press the red **Home** button on your Saorview remote control to access the full menu.

### Guide

Full 7 day TV guide for the Saorview channels. Browse programmes and set reminders. Scroll left for the roll-back guide and watch programmes that you missed (where available).

### On Demand

Players and apps ready when you are. Your Saorview Connect box will need to be connected to your broadband to use them.

### Spotlight

The Saorview team's picks of the best programmes to watch this week on Saorview channels and On Demand.

---

## **Satellite**

If you have connected your box to a satellite dish, you will be able to access additional free channels via satellite. This is not part of the Saorview Connect offer but is an additional feature provided by PowerPoint, the manufacturer. When you select **Satellite** for the first time you will be prompted to scan for satellite channels. You will need to enter your box PIN – default option is 0000. Your box PIN can be changed at any time from **Settings**.

## **PowerPoint**

A range of free and pay on demand apps provided by PowerPoint. Available apps subject to change.

## **Search**

Find a programme on one of the Saorview channels quickly, and set a reminder.

## **Recordings**

You can use your Saorview Connect box to record one programme whilst you watch another, and to pause and play live TV. You need to connect an external hard drive to the USB socket at the back of your box. We recommend the external hard drive is USB3 and a minimum size of 500GB for best performance. The box will erase and reformat the drive for recording, so please ensure you don't have any other files on the drive. Follow the instructions on screen to complete the process. Recordings will appear in the left hand menu on the Home screen only when an external drive is connected to the box.

## REMOTE CONTROL

### Power

Puts the box into standby and turns it on again.

### TV

Your Saorview remote control can be used to operate your TV. Find out how at [saorview.ie](http://saorview.ie)

### Recordings

Go straight to your recordings.\*

### Search

Title search for programmes on Saorview channels.

### Up Down Left Right and OK

Use the arrows to get around and OK to confirm.

### Subtitles

Turns subtitles on or off.\*\*





---

## Spotlight

The Saorview team's picks of the best programmes to watch this week on Saorview channels and On Demand.

## On Demand

Players and apps ready when you are.

## Home

Takes you to the main menu.

## Guide

Opens the guide for Saorview channels.

## Exit

Takes you back to live TV.

## Audio Description

Turns audio description on or off.\*\*

\* Recordings is only enabled when you have connected an external hard drive to the USB port on your Saorview Connect box.

\*\* On Saorview channels only, and when available.



---

## SAORVIEW APP



Download the Saorview app for Apple and Android devices. Use the app on your mobile or tablet to make your Saorview experience even better.



---

## SAORVIEW ID

Register for a Saorview ID to ensure you are kept up to date with the latest news from Saorview. Register through the Saorview website at [saorview.ie](http://saorview.ie) or through the Saorview app.

# Safety Notice

---

- Power off all devices during connection set-up to prevent electric shock.
- Unplug the power adapter from the wall socket to completely disconnect the product from the mains.
- Do not place sources of naked flames, such as lit candles, on the product.
- Opening the product results in loss of warranty and can cause electric shock.
- Condensation can be produced within the product, e.g. if the product is brought from a cold to a warm environment. Wait for about one hour before operating the product. After that time, the condensation will normally have evaporated.
- The product has feet on its bottom side. Since the surfaces of furniture are made of very different materials that a wide variety of care products are used on, we cannot exclude the possibility of some of these substances or their ingredients softening or otherwise damaging the feet. Place a non-slip mat under the feet, as appropriate.
- If the batteries are not used for a long period, they should be removed from the remote control unit. Replace the batteries at least once a year to prevent them from leaking.
- Do not expose the batteries to extreme conditions or excessive heat, for instance, radiators, sunshine, fire or the like. This will result in an increased risk of leakage or explosion.
- Never try to reactivate used batteries with heat, charging or other methods.
- Batteries must not be dismantled and short-circuited.
- When inserting the batteries, observe the correct polarity (+/-), otherwise there is danger of damage.

# Need help?

---

With simple how-to videos, live help and our fantastic call centre team, we're ready to do whatever we can to answer your questions about Saorview.

[www.saorview.ie](http://www.saorview.ie)

Call centre **1890 222 012**  
**or 01 258 3540**

Open from 10am to 9pm Monday to Friday  
and from 10am to 6pm at weekends.

 [/saorviewirl](https://www.facebook.com/saorviewirl)

 [@saorview](https://twitter.com/saorview)

---

This Quick Start Guide and the full manual can be downloaded from the Saorview website at [saorview.ie](http://saorview.ie)

For product support, call PowerPoint on 01 409 2260 or email [help@shomar.ie](mailto:help@shomar.ie)

***PowerPoint***

---

Saorview and Saorview Connect are registered trademarks of Raidió Teilifís Éireann. Full terms apply, see [saorview.ie](http://saorview.ie). The details in this guide are correct at the time of going to print and are for guidance only. The product features outlined are subject to change at any time without notice.